



 **ESTA** <sup>®</sup>  
**PARKET**

*Stock Collection 2020/2021*

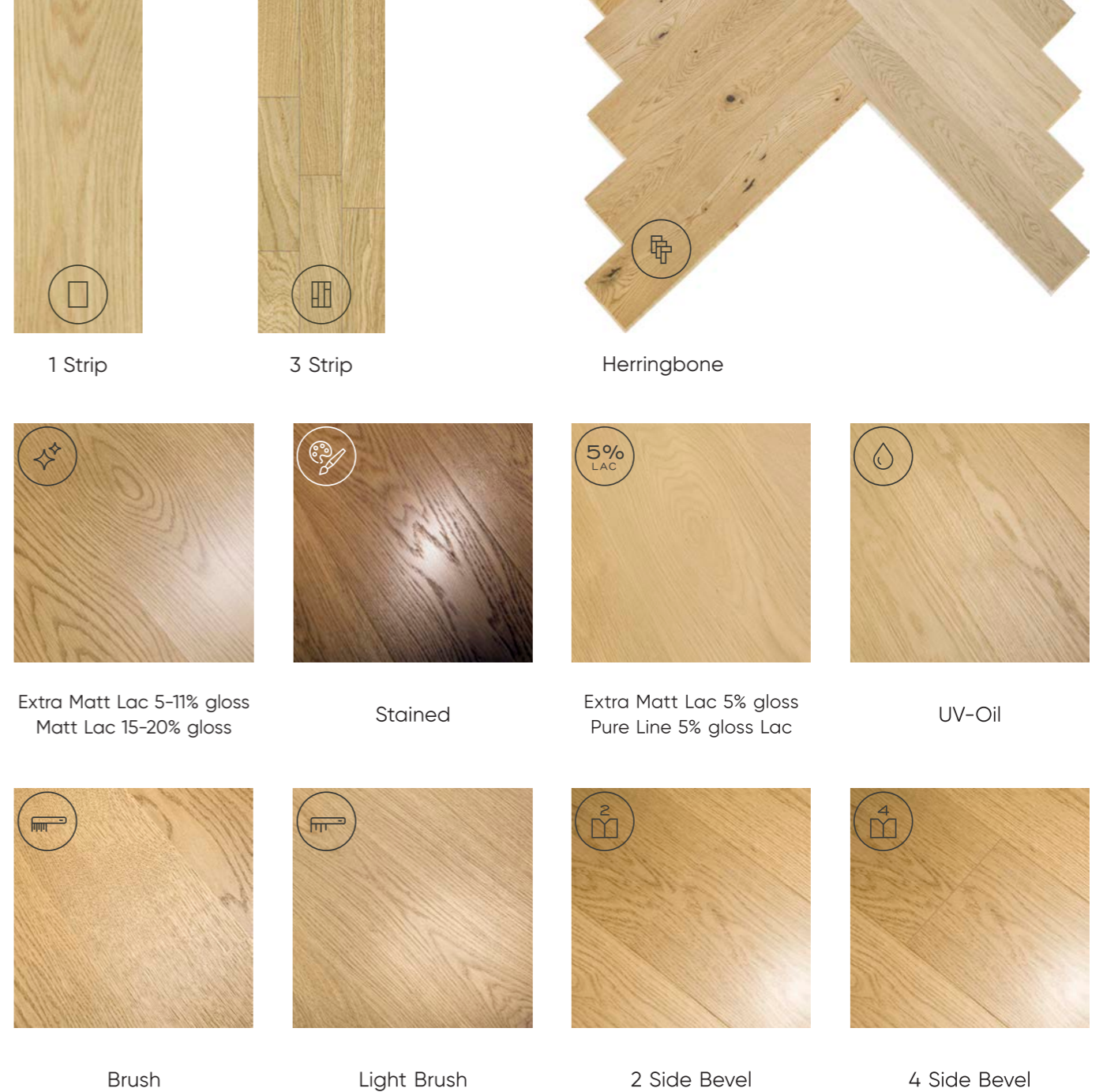
# Introduction



## Top Quality Varied Designs

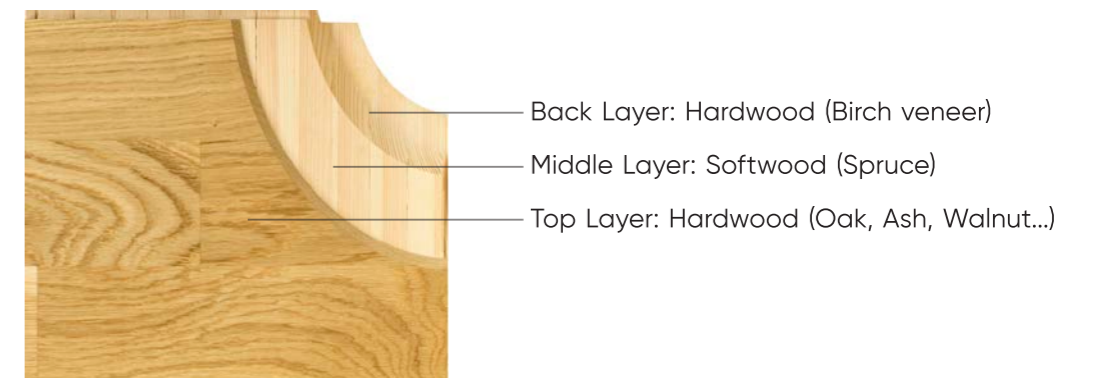
Estaparket floors are engineered for long wear resistance and are designed to withstand Scandinavian climate conditions with dry air in winter and high moisture air in rain season. This allows Estaparket to fit various climate conditions around the globe.

Estaparket is sold in Europe, Asia, America, Australia and Africa. Continuous innovation of our products and implementation of new technologies has made our floors truly unique.



## Unique Construction (3 layer with birch veneer bottom layer)

Unique perfectly balanced construction. Such combination allows perfect parquet board balance and board stability. Hardwood on top layer and balancing back layer allow to minimise geometrical board adjustments according to climate. Especially if underfloor heating is used.

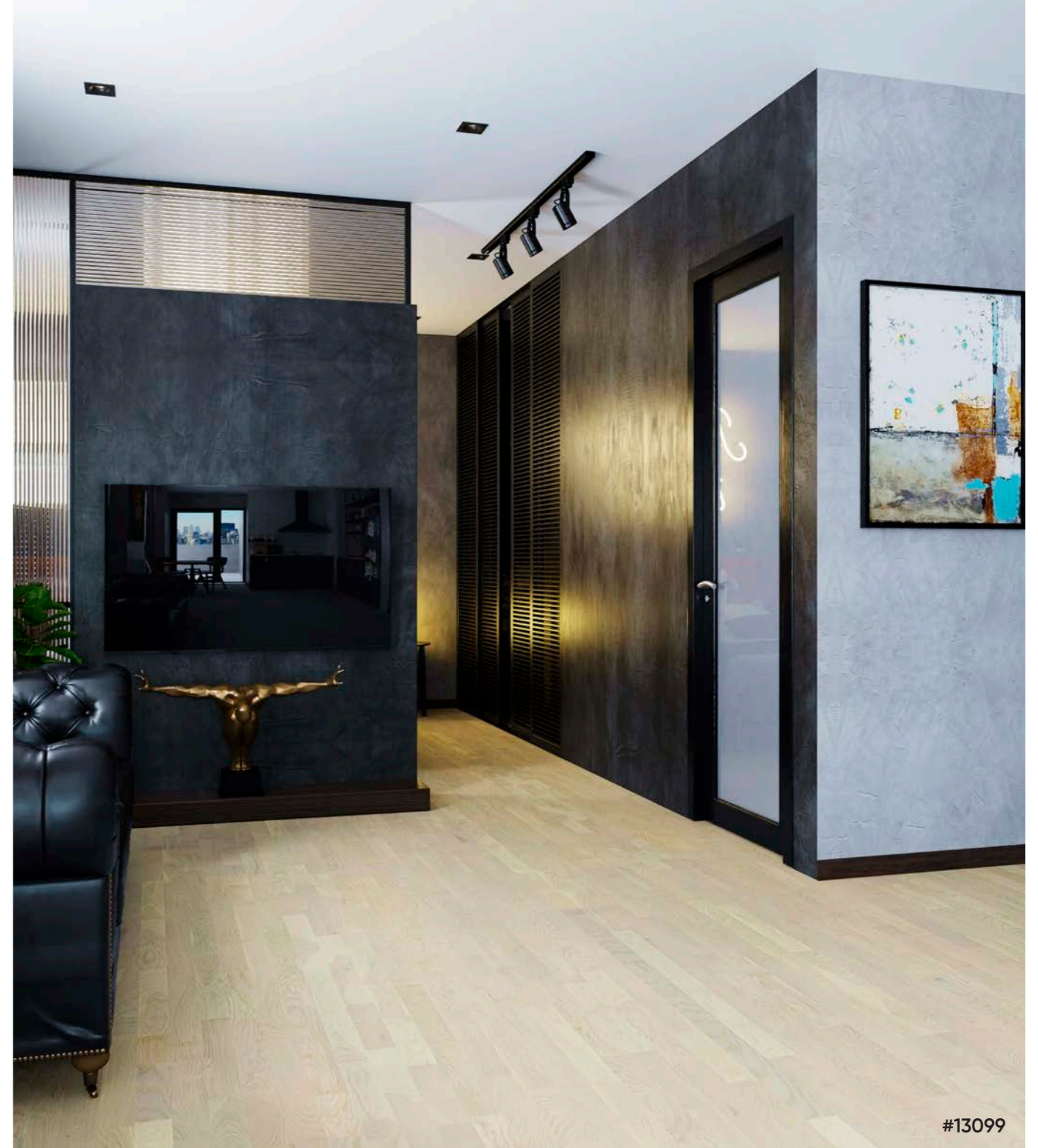




#23058

**3 Strip Ash Elite White Extra Matt Lac. NB Light Brushed Gloss 5%** High contrast natural color variation with brownheart, minimal amount of knots.

Size: 14 x 204 x 2200 mm  
 Top Layer: Above 3 mm  
 Pattern: 3 Strip  
 Grading: Elite  
 Brushing: Light Brushed  
 Bevels: No bevels  
 1 pack 6 pcs: 2.6928 m<sup>2</sup>  
 Finish: Extra Matt Lac 5% gloss  
 Underfloor Heating: Allowed  
 Lock: UNILIN, Click  
 Care: \*\*\*\*  
 Scratch Resistance: \*\*\*\*\*  
 Construction: 3 layer: Ash | Spruce | Birch



#13099

**3 Strip Oak Promo White Extra Matt Lac. NB Light Brushed Gloss 5-11%** Moderate color variation and sapwood allowed. Healthy and repaired knots allowed, repaired with light color filler.

Size: 13 x 204 x 2200 mm  
 Top Layer: 2.5 mm  
 Pattern: 3 Strip  
 Grading: Vintage  
 Brushing: Light Brushed  
 Bevels: No bevels  
 1 pack 6 pcs: 2.6928 m<sup>2</sup>  
 Finish: Extra Matt Lac 5-11% gloss  
 Underfloor Heating: Allowed  
 Lock: UNILIN, Click  
 Care: \*\*\*\*\*  
 Scratch Resistance: \*\*\*\*\*  
 Construction: 3 layer: Oak | Spruce | Birch

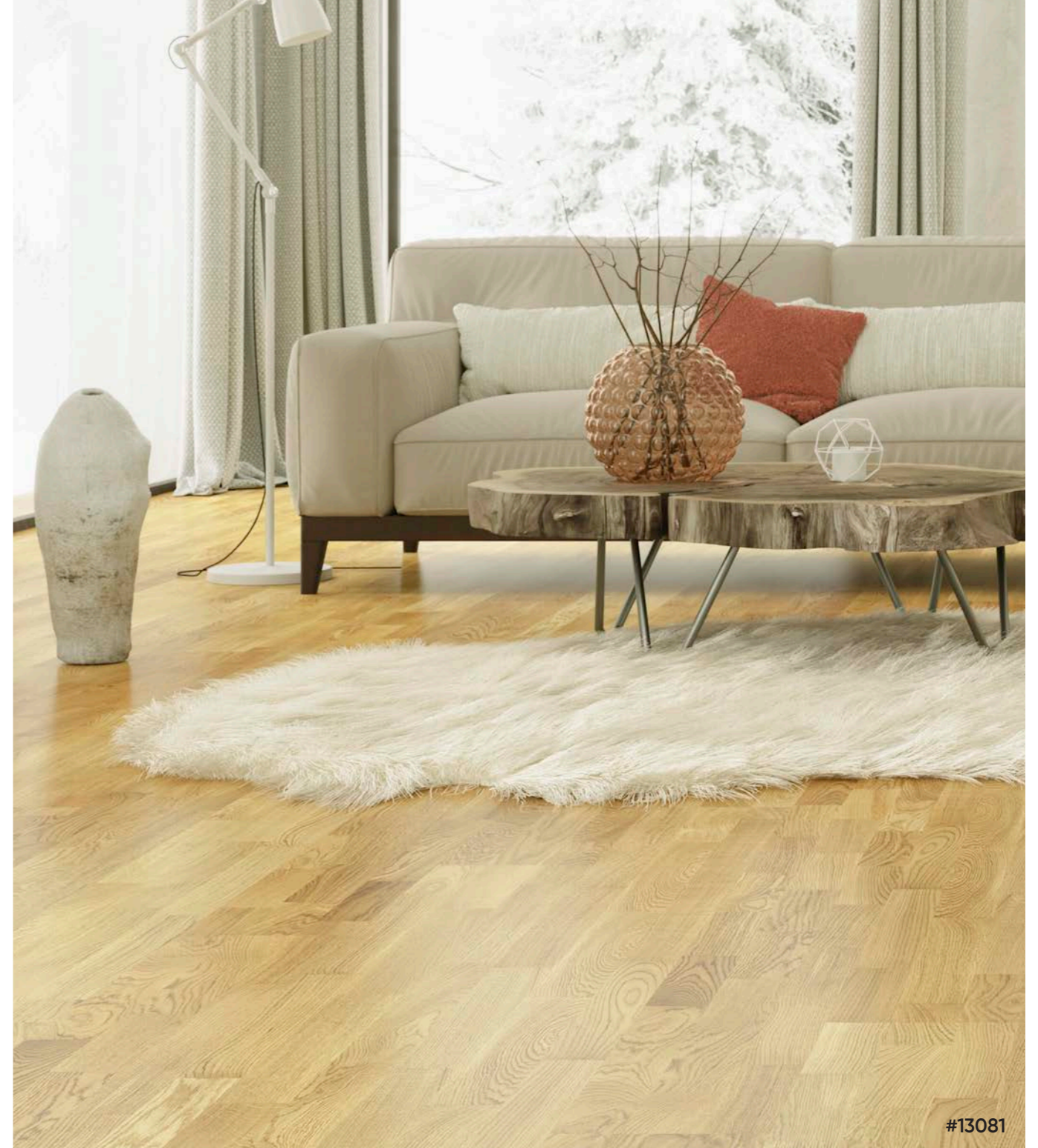




#23055

**3 Strip Ash Elegant Pure Line NB Light Brushed Gloss 5%**  
High contrast natural color variation with brownheart, minimal amount of knots.

Size: 14 x 204 x 2190 mm  
 Top Layer: Above 3 mm  
 Pattern: 3 Strip  
 Grading: Elegant  
 Brushing: Light Brushed  
 Bevels: No bevels  
 1 pack 6 pcs: 2.68056 m<sup>2</sup>  
 Finish: Pure Line 5% gloss  
 Underfloor Heating: Allowed  
 Lock: UNILIN, Click  
 Care: \*\*\*\*\*  
 Scratch Resistance: \*\*\*\*\*  
 Construction: 3 layer: Ash | Spruce | Birch



#13081

**3 Strip Oak Village Matt Lac. NB** Natural color variation with sapwood < 15 mm on a lamella side, healthy and repaired knots allowed.

Size: 14 x 204 x 2200 mm  
 Top Layer: Above 3 mm  
 Pattern: 3 Strip  
 Grading: Village  
 Brushing: No  
 Bevels: No bevels  
 1 pack 6 pcs: 2.6928 m<sup>2</sup>  
 Finish: Matt Lac 15-20% gloss  
 Underfloor Heating: Allowed  
 Lock: UNILIN, Click  
 Care: \*\*\*\*\*  
 Scratch Resistance: \*\*\*\*\*  
 Construction: 3 layer: Oak | Spruce | Birch

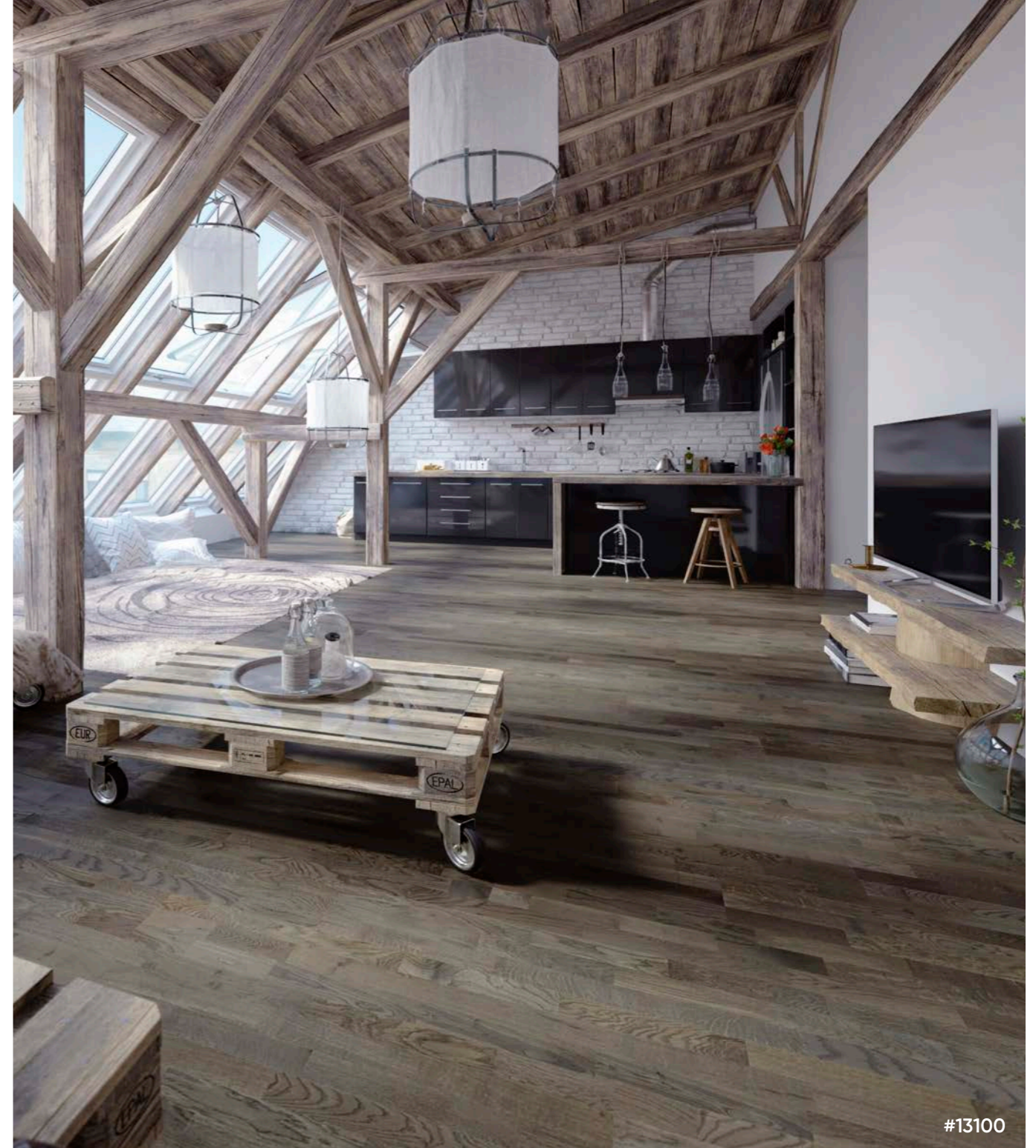




#13097

**3 Strip Oak Promo Extra Matt Lac. NB Light Brushed Gloss 5-11%** High color variation and sapwood allowed. Healthy and repaired knots allowed, repaired with oak color filler.

Size: 13 x 204 x 2200 mm  
 Top Layer: 2.5 mm  
 Pattern: 3 Strip  
 Grading: Vintage  
 Brushing: Light Brushed  
 Bevels: No bevels  
 1 pack 6 pcs: 2.6928 m<sup>2</sup>  
 Finish: Extra Matt Lac 5-11% gloss  
 Underfloor Heating: Allowed  
 Lock: UNILIN, Click  
 Care: \*\*\*\*\*  
 Scratch Resistance: \*\*\*\*\*  
 Construction: 3 layer: Oak | Spruce | Birch



#13100

**3 Strip Oak Promo Grey Extra Matt Lac. NB Light Brushed Gloss 5-11%** High color variation and sapwood allowed. Healthy and repaired knots allowed, repaired with stained filler.

Size: 13 x 204 x 2200 mm  
 Top Layer: 2.5 mm  
 Pattern: 3 Strip  
 Grading: Vintage  
 Brushing: Light Brushed  
 Bevels: No bevels  
 1 pack 6 pcs: 2.6928 m<sup>2</sup>  
 Finish: Extra Matt Lac 5-11% gloss  
 Underfloor Heating: Allowed  
 Lock: UNILIN, Click  
 Care: \*\*\*\*\*  
 Scratch Resistance: \*\*\*\*\*  
 Construction: 3 layer: Oak | Spruce | Birch





#11162

**1 Strip Oak CD Latte UV-Oil 2B** High color variation allowed. Occasional sapwood < 50 mm wide. Healthy and repaired knots allowed, filled cracks < 150 mm long, repaired with light color filler.

Size: 14 x 160 x 2200 mm  
 Top Layer: Above 3 mm  
 Pattern: 1 Strip  
 Grading: Village/Ranch  
 Brushing: Light Brushed  
 Bevels: 2-side micro bevel  
 1 pack 6 pcs: 2.112 m<sup>2</sup>  
 Finish: UV-Oil 4-6% gloss  
 Underfloor Heating: Allowed  
 Lock: UNILIN, Click  
 Care: \*\*\*\*  
 Scratch Resistance: \*\*\*  
 Construction: 3 layer: Oak | Spruce | Birch



#21072

**1 Strip Ash Elegant Frost Ivory Pores Extra Matt Lac. 2B Brushed Gloss 5%** Natural color variation with brownheart present, minimal amount of knots.

Size: 14 x 160 x 2200 mm  
 Top Layer: Above 3 mm  
 Pattern: 1 Strip  
 Grading: Elegant  
 Brushing: Brushed  
 Bevels: 2-side micro bevel  
 1 pack 6 pcs: 2.112 m<sup>2</sup>  
 Finish: Extra Matt Lac 5% gloss  
 Underfloor Heating: Allowed  
 Lock: UNILIN, Click  
 Care: \*\*\*\*\*  
 Scratch Resistance: \*\*\*\*\*  
 Construction: 3 layer: Ash | Spruce | Birch

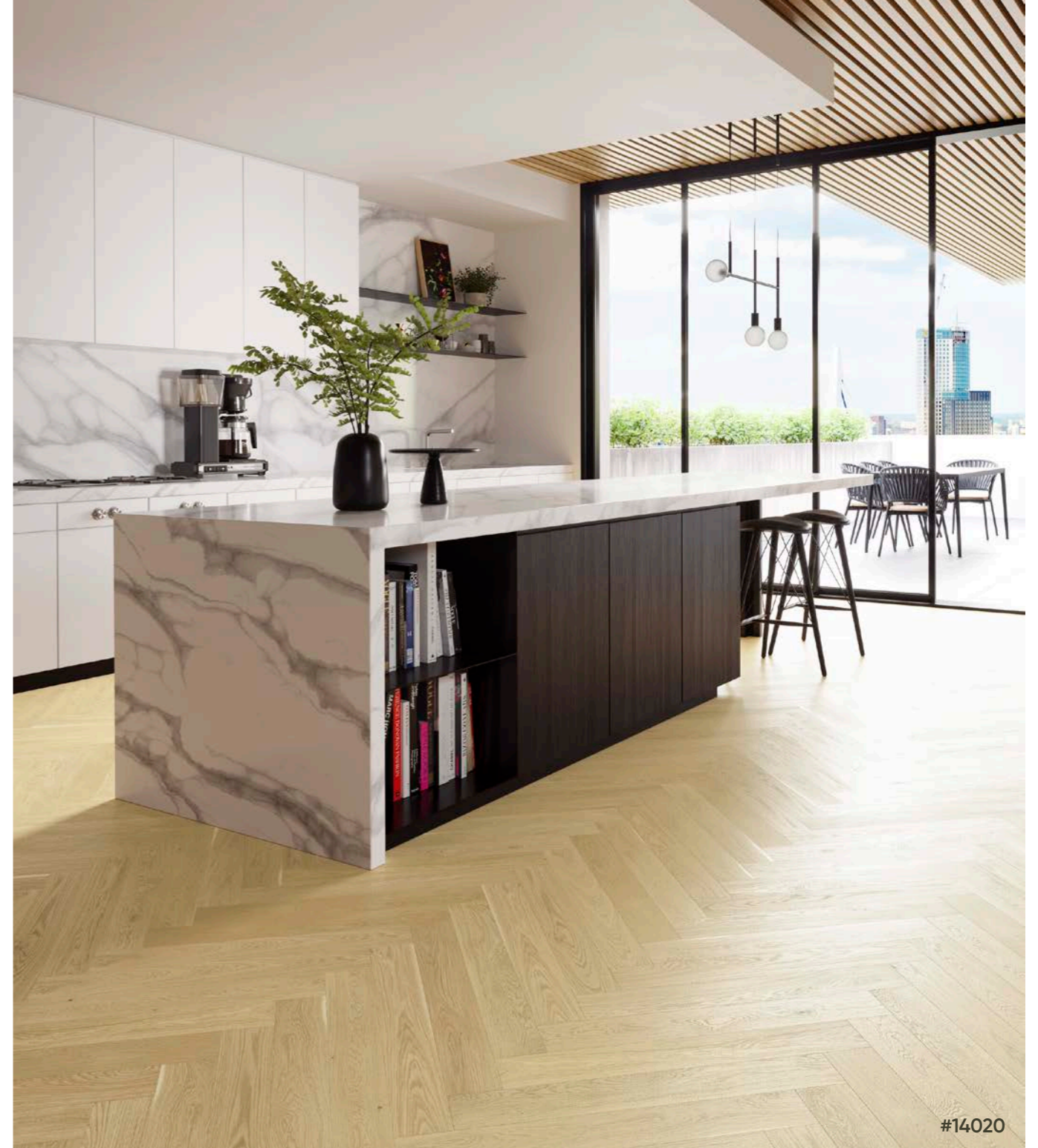




#11155

1 Strip Oak Nordic London Extra Matt Lac. 2B Light Brushed Gloss 5-11% Moderate color variation. Regular sapwood allowed. Healthy and repaired knots allowed.

Size: 14 x 160 x 2200 mm  
 Top Layer: Above 3 mm  
 Pattern: 1 Strip  
 Grading: Town/Nordic  
 Brushing: Light Brushed  
 Bevels: 2-side micro bevel  
 1 pack 6 pcs: 2.112 m<sup>2</sup>  
 Finish: Extra Matt Lac 5-11% gloss  
 Underfloor Heating: Allowed  
 Lock: UNILIN, Click  
 Care: \*\*\*\*\*  
 Scratch Resistance: \*\*\*\*\*  
 Construction: 3 layer: Oak | Spruce | Birch



#14020

Oak Herringbone AB Dazy Extra Matt Lac. 4B Brushed Gloss 5% Moderate color variation. Regular sapwood allowed. Healthy and repaired knots allowed.

Size: 14 x 100 x 700 mm  
 Top Layer: Above 3 mm  
 Pattern: Herringbone  
 Grading: Town/City  
 Brushing: Brushed  
 Bevels: 4-side micro bevel  
 1 pack 24 pcs: 1.68 m<sup>2</sup>  
 Finish: Pure Line 5% gloss  
 Underfloor Heating: Allowed  
 Lock: T&G  
 Care: \*\*\*\*\*  
 Scratch Resistance: \*\*\*\*\*  
 Construction: 2 layer: Birch plywood core





**1 Strip Oak BC Dazy Extra Matt Lac. 2B Brushed Gloss 5%** Moderate color variation, occasional sapwood. Healthy and repaired knots allowed, repaired with light color filler.

Size: 14 x 180 x 2000 mm  
 Top Layer: Above 3 mm  
 Pattern: 1 Strip  
 Grading: Town/Village  
 Brushing: Brushed  
 Bevels: 2-side micro bevel  
 1 pack 6 pcs: 2.16 m<sup>2</sup>  
 Finish: Extra Matt Lac 5% gloss  
 Underfloor Heating: Allowed  
 Lock: UNILIN, Click  
 Care: \*\*\*\*\*  
 Scratch Resistance: \*\*\*\*  
 Construction: 3 layer: Oak | Spruce | Birch



**Oak Herringbone AB Pure Line 4B Brushed Gloss 5%** Natural color variation. Occasional sapwood. Relatively clean grading with small healthy and repaired knots allowed.

Size: 14 x 100 x 700 mm  
 Top Layer: Above 3 mm  
 Pattern: Herringbone  
 Grading: Town/City  
 Brushing: Brushed  
 Bevels: 4-side micro bevel  
 1 pack 24 pcs: 1.68 m<sup>2</sup>  
 Finish: Pure Line 5% gloss  
 Underfloor Heating: Allowed  
 Lock: T&G  
 Care: \*\*\*\*\*  
 Scratch Resistance: \*\*\*\*  
 Construction: 2 layer: Birch plywood core



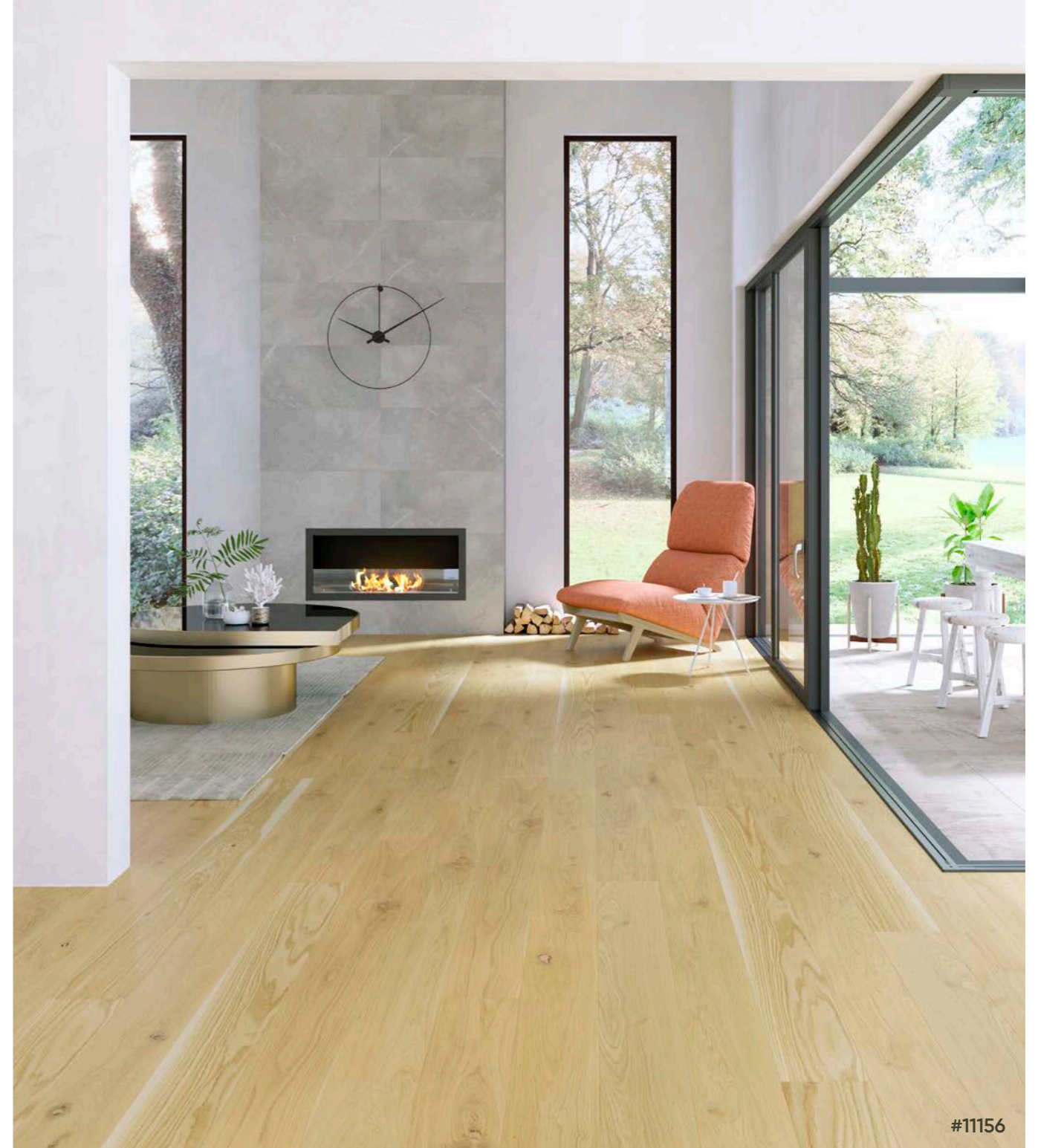




#21073

**1 Strip Ash Elegant Pure Line 2B Brushed Gloss 5%** Natural color variation with brownheart present. Contrast of light and dark colors. Minimal amount of knots.

Size: 14 x 160 x 2200 mm  
 Top Layer: Above 3 mm  
 Pattern: 1 Strip  
 Grading: Elegant  
 Brushing: Brushed  
 Bevels: 2-side micro bevel  
 1 pack 6 pcs: 2.112 m<sup>2</sup>  
 Finish: Pure Line 5% gloss  
 Underfloor Heating: Allowed  
 Lock: UNILIN, Click  
 Care: \*\*\*\*\*  
 Scratch Resistance: \*\*\*\*\*  
 Construction: 3 layer: Ash | Spruce | Birch



#11156

**1 Strip Oak Village Extra Matt Lac. 2B Brushed Gloss 5%** Higher color variation allowed. Occasional sapwood below 30 mm wide. Healthy and repaired knots allowed, cracks repaired with light color filler.

Size: 14 x 180 x 2200 mm  
 Top Layer: Above 3 mm  
 Pattern: 1 Strip  
 Grading: Village  
 Brushing: Brushed  
 Bevels: 2-side micro bevel  
 1 pack 6 pcs: 2.376 m<sup>2</sup>  
 Finish: Extra Matt Lac 5% gloss  
 Underfloor Heating: Allowed  
 Lock: UNILIN, Click  
 Care: \*\*\*\*\*  
 Scratch Resistance: \*\*\*\*\*  
 Construction: 3 layer: Oak | Spruce | Birch





#11157

**1 Strip Oak Elite Pure Line 2B Brushed Gloss 5%** Moderate or little color variation allowed. Minimal sapwood presence. Very small healthy and repaired knots allowed.

Size: 14 x 180 x 2100 mm  
 Top Layer: Above 3 mm  
 Pattern: 1 Strip  
 Grading: Elite  
 Brushing: Brushed  
 Bevels: 2-side micro bevel  
 1 pack 6 pcs: 2.268 m<sup>2</sup>  
 Finish: Pure Line 5% gloss  
 Underfloor Heating: Allowed  
 Lock: UNILIN, Click  
 Care: \*\*\*\*\*  
 Scratch Resistance: \*\*\*\*\*  
 Construction: 3 layer: Oak | Spruce | Birch



#11158

**1 Strip Oak ABC Pure Line 2B Brushed Gloss 5%** Natural grading, allowing color variations. Occasional sapwood below 30 mm wide. Healthy and repaired knots allowed, cracks repaired with light color filler.

Size: 14 x 180 x 2100 mm  
 Top Layer: Above 3 mm  
 Pattern: 1 Strip  
 Grading: City/Town/Village  
 Brushing: Brushed  
 Bevels: 2-side micro bevel  
 1 pack 6 pcs: 2.268 m<sup>2</sup>  
 Finish: Pure Line 5% gloss  
 Underfloor Heating: Allowed  
 Lock: UNILIN, Click  
 Care: \*\*\*\*\*  
 Scratch Resistance: \*\*\*\*\*  
 Construction: 3 layer: Oak | Spruce | Birch

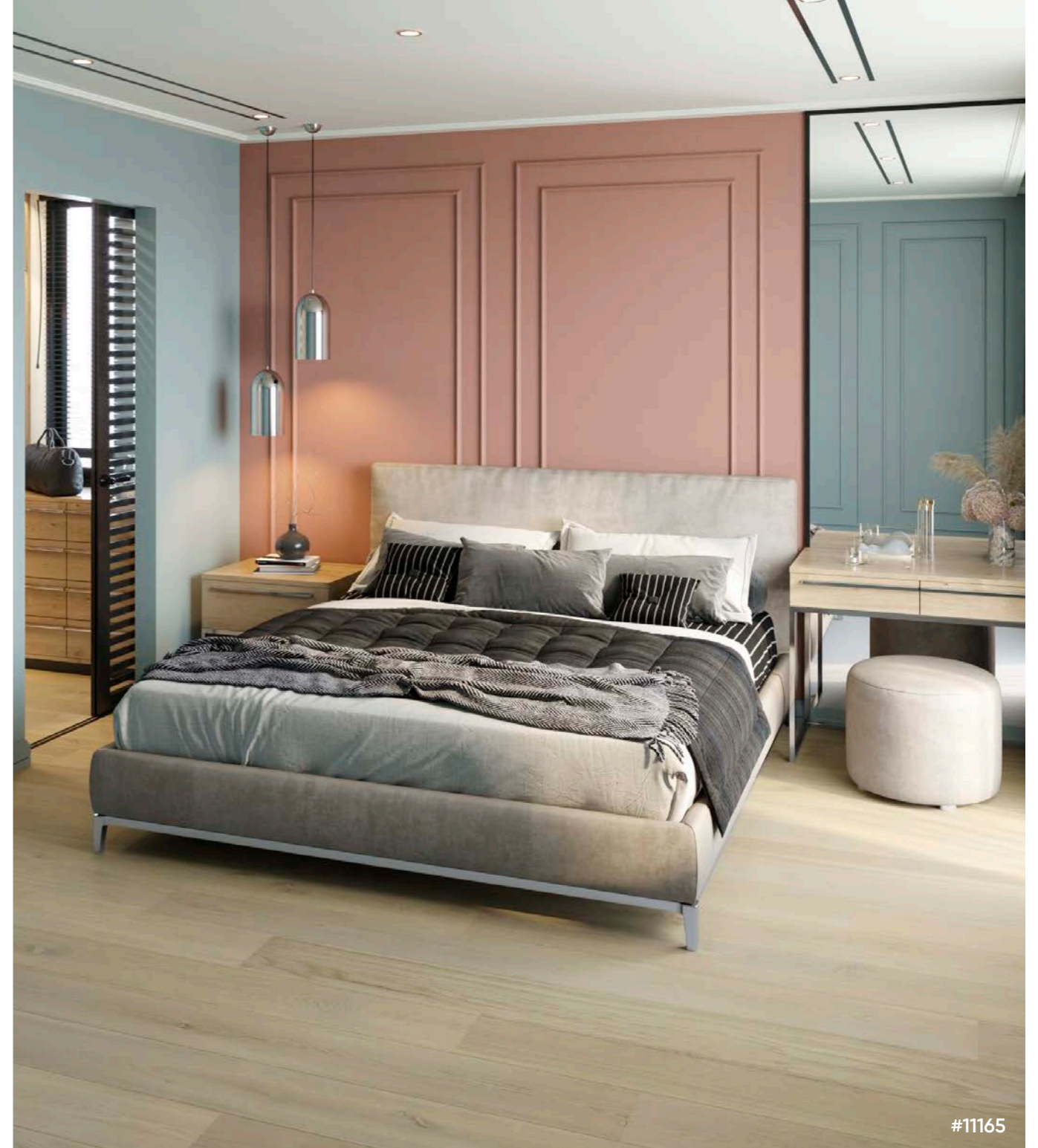




#21074

1 Strip Ash Elegant Sandstone Original Extra Matt Lac. 2B Brushed Gloss 5% Natural color variation due to brownheart present. Minimal amount of knots.

Size: 14 x 160 x 2390 mm  
 Top Layer: Above 3 mm  
 Pattern: 1 Strip  
 Grading: Elegant  
 Brushing: Brushed  
 Bevels: 2-side micro bevel  
 1 pack 6 pcs: 2.2944 m<sup>2</sup>  
 Finish: Extra Matt Lac 5% gloss  
 Underfloor Heating: Allowed  
 Lock: UNILIN, Click  
 Care: \*\*\*\*\*  
 Scratch Resistance: \*\*\*\*  
 Construction: 3 layer: Ash | Spruce | Birch



#11165

1 Strip Oak ABC Sandstone Original Extra Matt Lac. 2B Brushed Gloss 5% Natural color variations allowed. Occasional sapwood. Healthy and repaired knots allowed, cracks repaired with light color filler.

Size: 14 x 160 x 2000 mm  
 Top Layer: Above 3 mm  
 Pattern: 1 Strip  
 Grading: City/Town/Village  
 Brushing: Brushed  
 Bevels: 2-side micro bevel  
 1 pack 6 pcs: 1.92 m<sup>2</sup>  
 Finish: Extra Matt Lac 5% gloss  
 Underfloor Heating: Allowed  
 Lock: UNILIN, Click  
 Care: \*\*\*\*\*  
 Scratch Resistance: \*\*\*\*  
 Construction: 3 layer: Oak | Spruce | Birch





#11159

**1 Strip Oak ABC Dune White Pores Extra Matt Lac. 2B Brushed Gloss 5%** Natural color variations allowed. Occasional sapwood. Healthy and repaired knots allowed, cracks repaired with filler.

Size: 14 x 180 x 2100 mm  
 Top Layer: Above 3 mm  
 Pattern: 1 Strip  
 Grading: City/Town/Village  
 Brushing: Brushed  
 Bevels: 2-side micro bevel  
 1 pack 6 pcs: 2.268 m<sup>2</sup>  
 Finish: Extra Matt Lac 5% gloss  
 Underfloor Heating: Allowed  
 Lock: UNILIN, Click  
 Care: \*\*\*\*\*  
 Scratch Resistance: \*\*\*\*  
 Construction: 3 layer: Oak | Spruce | Birch



#21075

**1 Strip Ash Elegant Dusky Grey White Pores Extra Matt Lac. 2B Brushed Gloss 5%** Natural color variation with brownheart present. Minimal amount of knots.

Size: 14 x 160 x 2390 mm  
 Top Layer: Above 3 mm  
 Pattern: 1 Strip  
 Grading: Elegant  
 Brushing: Brushed  
 Bevels: 2-side micro bevel  
 1 pack 6 pcs: 2.2944 m<sup>2</sup>  
 Finish: Extra Matt Lac 5% gloss  
 Underfloor Heating: Allowed  
 Lock: UNILIN, Click  
 Care: \*\*\*\*\*  
 Scratch Resistance: \*\*\*\*  
 Construction: 3 layer: Ash | Spruce | Birch





#21076

**1 Strip Ash Elegant Dusky Grey Extra Matt Lac. 2B Brushed Gloss 5%** Natural color variation with brownheart present.

Size: 14 x 160 x 2200 mm  
 Top Layer: Above 3 mm  
 Pattern: 1 Strip  
 Grading: Elegant  
 Brushing: Brushed  
 Bevels: 2-side micro bevel  
 1 pack 6 pcs: 2.112 m<sup>2</sup>  
 Finish: Extra Matt Lac 5% gloss  
 Underfloor Heating: Allowed  
 Lock: UNILIN, Click  
 Care: \*\*\*\*\*  
 Scratch Resistance: \*\*\*\*\*  
 Construction: 3 layer: Ash | Spruce | Birch



#11166

**1 Strip Oak BC Dusky Grey White Pores Extra Matt Lac. 2B Brushed Gloss 5%** Natural color variations allowed. Occasional sapwood. Healthy and repaired knots allowed, cracks repaired with filler.

Size: 14 x 180 x 2100 mm  
 Top Layer: Above 3 mm  
 Pattern: 1 Strip  
 Grading: Town/Village  
 Brushing: Brushed  
 Bevels: 2-side micro bevel  
 1 pack 6 pcs: 2.268 m<sup>2</sup>  
 Finish: Extra Matt Lac 5% gloss  
 Underfloor Heating: Allowed  
 Lock: UNILIN, Click  
 Care: \*\*\*\*\*  
 Scratch Resistance: \*\*\*\*\*  
 Construction: 3 layer: Oak | Spruce | Birch





#11167

1 Strip Oak ABC Olive Grey Ivory Pores Extra Matt Lac. 2B Brushed Gloss 5% Natural color variations allowed. Occasional sapwood. Healthy and repaired knots allowed, cracks repaired with filler.

Size: 14 x 180 x 1800 mm  
 Top Layer: Above 3 mm  
 Pattern: 1 Strip  
 Grading: City/Town/Village  
 Brushing: Brushed  
 Bevels: 2-side micro bevel  
 1 pack 6 pcs: 1.944 m<sup>2</sup>  
 Finish: Extra Matt Lac 5% gloss  
 Underfloor Heating: Allowed  
 Lock: UNILIN, Click  
 Care: \*\*\*\*\*  
 Scratch Resistance: \*\*\*\*  
 Construction: 3 layer: Oak | Spruce | Birch



#11168

1 Strip Oak ABC Dusky Grey Extra Matt Lac. 2B Brushed Gloss 5% Natural color variations allowed. Occasional sapwood. Healthy and repaired knots allowed, cracks repaired with filler.

Size: 14 x 160 x 2000 mm  
 Top Layer: Above 3 mm  
 Pattern: 1 Strip  
 Grading: City/Town/Village  
 Brushing: Brushed  
 Bevels: 2-side micro bevel  
 1 pack 6 pcs: 1.92 m<sup>2</sup>  
 Finish: Extra Matt Lac 5% gloss  
 Underfloor Heating: Allowed  
 Lock: UNILIN, Click  
 Care: \*\*\*\*\*  
 Scratch Resistance: \*\*\*\*  
 Construction: 3 layer: Oak | Spruce | Birch

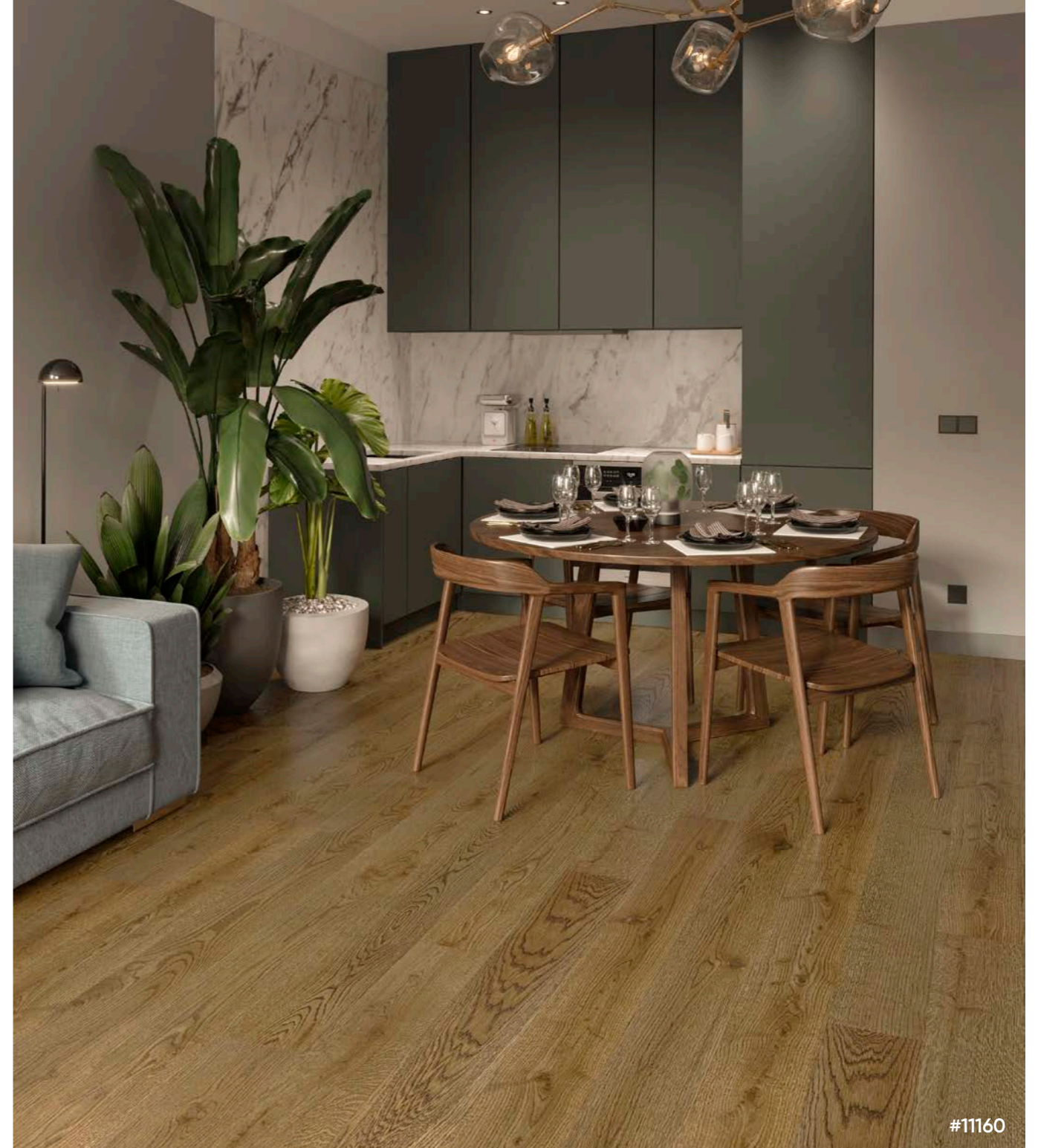




#11098

1 Strip Oak BC Kose Grey Pores Extra Matt Lac. 2B Brushed Gloss 5% Natural color variations allowed. Occasional sapwood. Healthy and repaired knots allowed, cracks repaired with filler.

Size: 14 x 180 x 2000 mm  
 Top Layer: Above 3 mm  
 Pattern: 1 Strip  
 Grading: Town/Village  
 Brushing: Brushed  
 Bevels: 2-side micro bevel  
 1 pack 6 pcs: 2.16 m<sup>2</sup>  
 Finish: Extra Matt Lac 5% gloss  
 Underfloor Heating: Allowed  
 Lock: UNILIN, Click  
 Care: \*\*\*\*\*  
 Scratch Resistance: \*\*\*\*\*  
 Construction: 3 layer: Oak | Spruce | Birch



#11160

1 Strip Oak ABC Stavanger Extra Matt Lac. 2B Light Brushed Gloss 5% Natural color variations allowed. Occasional sapwood. Healthy and repaired knots allowed, cracks repaired with filler.

Size: 14 x 180 x 2390 mm  
 Top Layer: Above 3 mm  
 Pattern: 1 Strip  
 Grading: City/Town/Village  
 Brushing: Light Brushed  
 Bevels: 2-side micro bevel  
 1 pack 6 pcs: 2.5812 m<sup>2</sup>  
 Finish: Extra Matt Lac 5% gloss  
 Underfloor Heating: Allowed  
 Lock: UNILIN, Click  
 Care: \*\*\*\*\*  
 Scratch Resistance: \*\*\*\*\*  
 Construction: 3 layer: Oak | Spruce | Birch





#31012

**1 Strip Walnut Rotary ABC Pure Line 2B Brushed** Natural color variation from very light to dark. Healthy knots unlimited in size, filled knots up to 35 mm in diameter, cracks repaired with walnut color filler.

Size: 14 x 190 x 2200 mm  
 Top Layer: 2 mm  
 Pattern: 1 Strip  
 Grading: ABC  
 Brushing: Brushed  
 Bevels: 2-side micro bevel  
 1 pack 6 pcs: 2.508 m<sup>2</sup>  
 Finish: Pure Line 5% gloss  
 Underfloor Heating: Allowed  
 Lock: UNILIN, Click  
 Care: \*\*\*\*  
 Scratch Resistance: \*\*\*\*  
 Construction: 4 layer: Walnut|Birch|Spruce|Birch



#31013

**1 Strip Walnut City Extra Matt Lac. 2B Brushed Gloss 5%** Natural color variation. Occasional healthy knots up to 20 mm in diameter, filled knots up to 10 mm in diameter.

Size: 14 x 190 x 2000 mm  
 Top Layer: Above 3 mm  
 Pattern: 1 Strip  
 Grading: City  
 Brushing: Brushed  
 Bevels: 2-side micro bevel  
 1 pack 6 pcs: 2.28 m<sup>2</sup>  
 Finish: Extra Matt Lac 5% gloss  
 Underfloor Heating: Allowed  
 Lock: UNILIN, Click  
 Care: \*\*\*\*  
 Scratch Resistance: \*\*\*\*  
 Construction: 3 layer: Walnut | Spruce | Birch



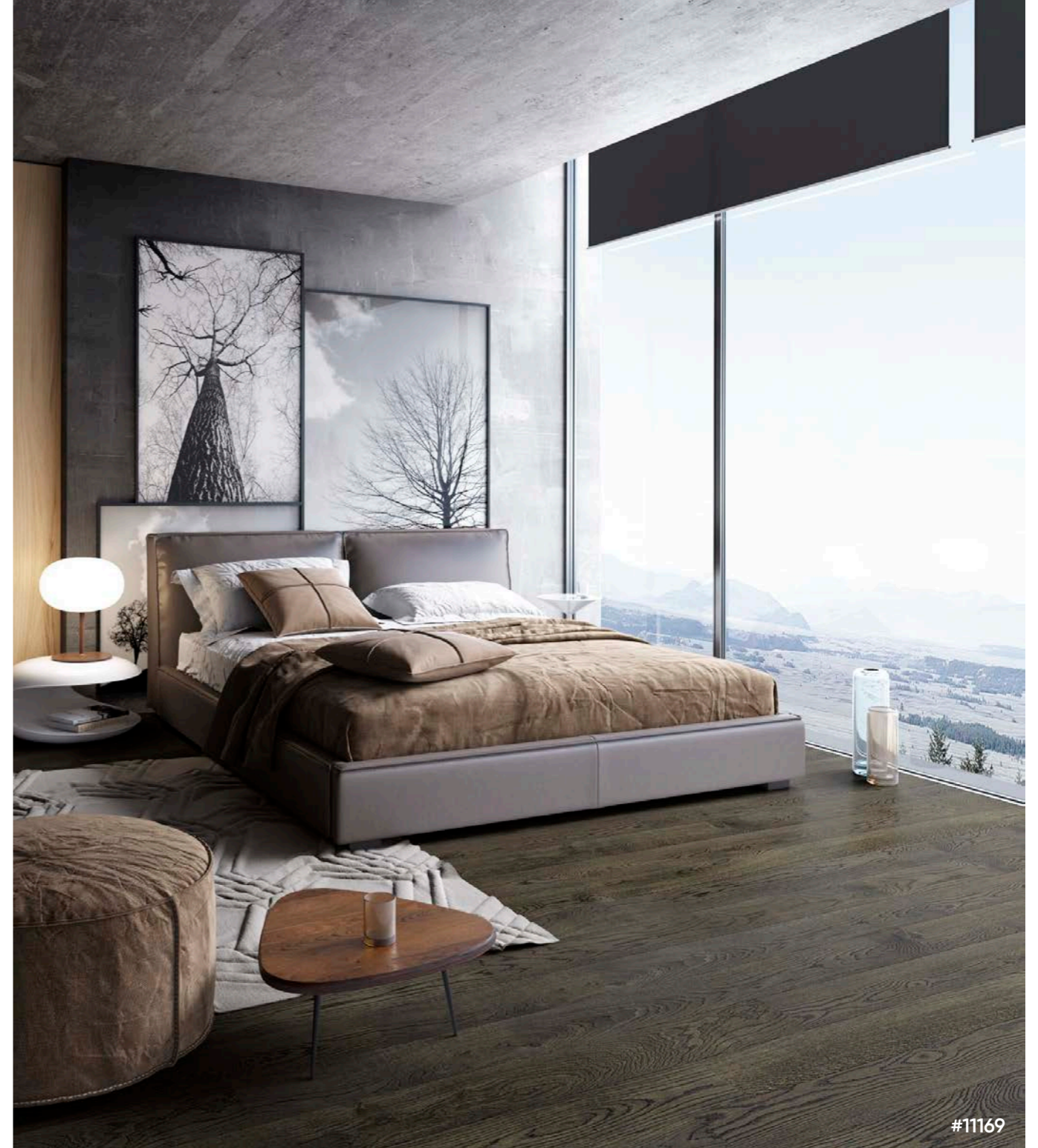




#14005

**Oak Herringbone BC Lava Grey Extra Matt Lac. 4B Brushed Gloss 5%** Slight color variation. Healthy and repaired knots allowed, cracks repaired with filler.

Size: 14 x 100 x 600 mm  
 Top Layer: Above 3 mm  
 Pattern: Herringbone  
 Grading: Town/Village  
 Brushing: Brushed  
 Bevels: 4-side micro bevel  
 1 pack 24 pcs: 1.44 m<sup>2</sup>  
 Finish: Extra Matt Lac 5% gloss  
 Underfloor Heating: Allowed  
 Lock: T&G  
 Care: \*\*\*\*\*  
 Scratch Resistance: \*\*\*\*  
 Construction: 2 layer: Birch plywood core



#11169

**1 Strip Oak ABCD Lava Grey UV-Oil 2B Brushed** Slight color variation. Healthy and repaired knots allowed, cracks repaired with filler.

Size: 14 x 180 x 2000 mm  
 Top Layer: Above 3 mm  
 Pattern: 1 Strip  
 Grading: City/Town/Village/Ranch  
 Brushing: Light Brushed  
 Bevels: 2-side micro bevel  
 1 pack 6 pcs: 2.16 m<sup>2</sup>  
 Finish: UV-Oil 4-6% gloss  
 Underfloor Heating: Allowed  
 Lock: UNILIN, Click  
 Care: \*\*\*\*  
 Scratch Resistance: \*\*\*  
 Construction: 3 layer: Oak | Spruce | Birch

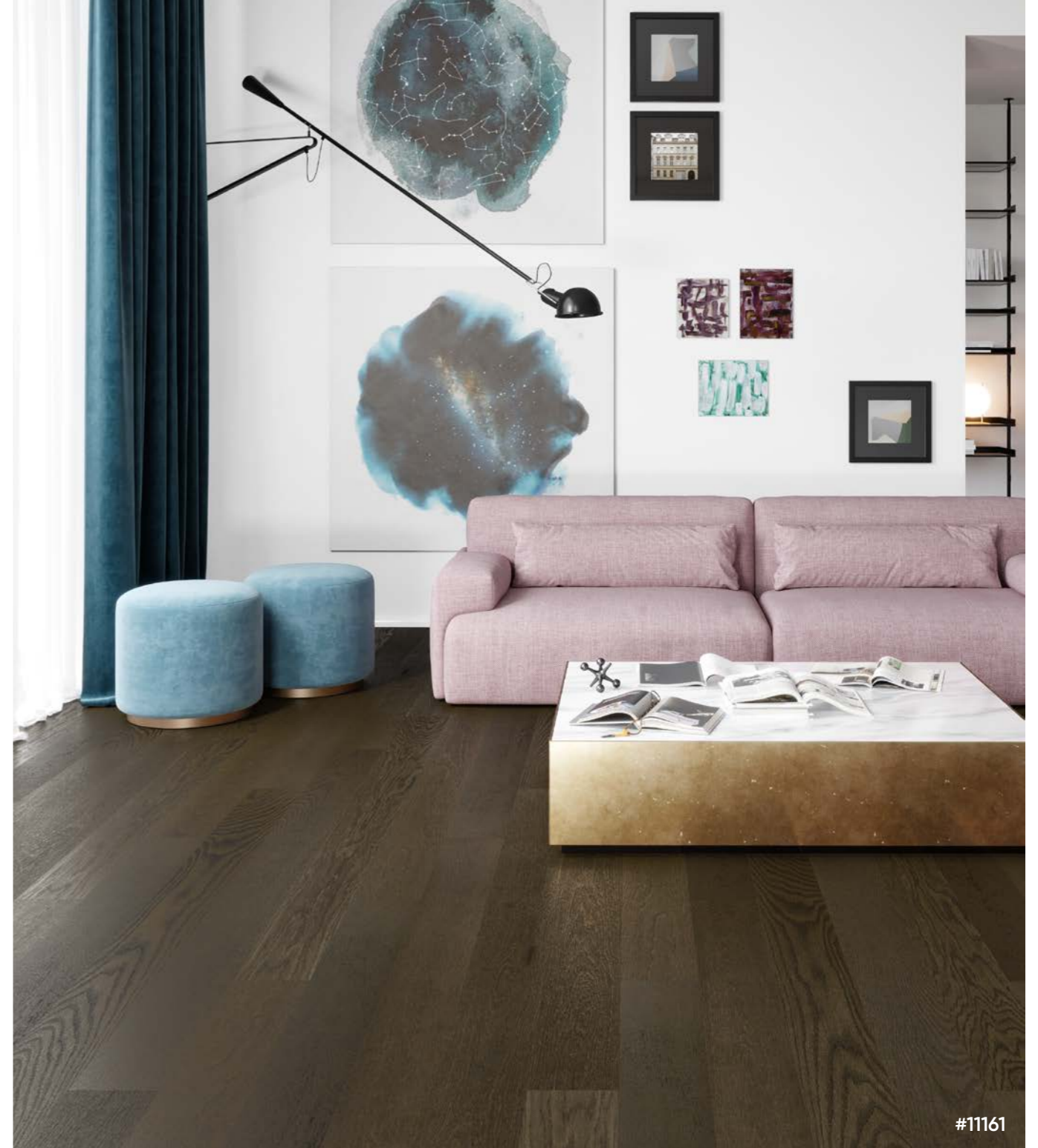




#21077

**1 Strip Ash Elegant Walnut Color Extra Matt Lac. 2B Brushed Gloss 5%** Natural color variation with brownheart present. Minimal amount of knots.

Size: 14 x 160 x 2390 mm  
 Top Layer: Above 3 mm  
 Pattern: 1 Strip  
 Grading: Elegant  
 Brushing: Brushed  
 Bevels: 2-side micro bevel  
 1 pack 6 pcs: 2.2944 m<sup>2</sup>  
 Finish: Extra Matt Lac 5% gloss  
 Underfloor Heating: Allowed  
 Lock: UNILIN, Click  
 Care: \*\*\*\*\*  
 Scratch Resistance: \*\*\*\*  
 Construction: 3 layer: Ash | Spruce | Birch



#11161

**1 Strip Oak BC Tobacco Brown Matt Lac. 2B Brushed** Slight color variation. Occasional sapwood present. Healthy and repaired knots allowed, cracks repaired with dark color filler.

Size: 14 x 160 x 2000 mm  
 Top Layer: Above 3 mm  
 Pattern: 1 Strip  
 Grading: Town/Village  
 Brushing: Brushed  
 Bevels: 2-side micro bevel  
 1 pack 6 pcs: 1.92 m<sup>2</sup>  
 Finish: Matt Lac 15-20% gloss  
 Underfloor Heating: Allowed  
 Lock: UNILIN, Click  
 Care: \*\*\*\*\*  
 Scratch Resistance: \*\*\*\*  
 Construction: 3 layer: Oak | Spruce | Birch





#21078

**1 Strip Ash Elegant Onyx Matt Lac. 2B Brushed**  
Slight color variation. Minimal amount of knots.

Size: 14 x 160 x 2200 mm  
 Top Layer: Above 3 mm  
 Pattern: 1 Strip  
 Grading: Elegant  
 Brushing: Brushed  
 Bevels: 2-side micro bevel  
 1 pack 6 pcs: 2.112 m<sup>2</sup>  
 Finish: Matt Lac 15-20% gloss  
 Underfloor Heating: Allowed  
 Lock: UNILIN, Click  
 Care: \*\*\*\*\*  
 Scratch Resistance: \*\*\*\*\*  
 Construction: 3 layer: Ash | Spruce | Birch



## Warranty

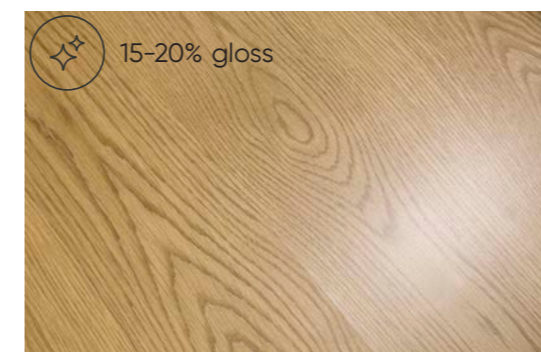
Estaparket offers limited warranty 30 years. Please see our warranty terms and conditions on our website.



## Innovation

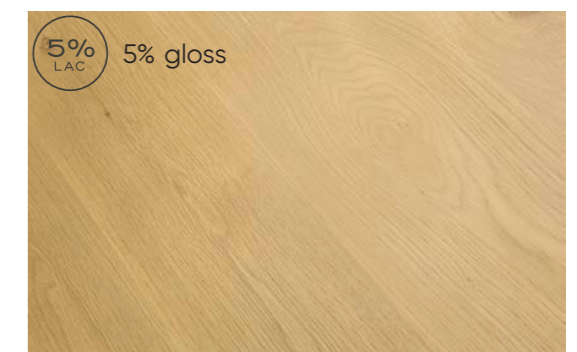
Today's trend is for natural surface that usually can be achieved only with oiled surface that requires a lot more maintenance, than lacquered surface. Lacquered surface is easy to clean and maintain but looks less natural. Estaparket offers innovative lacquering coating system that looks as natural as oiled surface and requires as little maintenance as traditional lacquered surface. The gloss level is only 5%.

Classical Look Surface



Matt Lac

Innovative Natural Look Surface



Extra Matt Lac

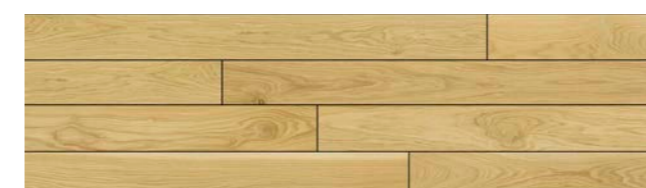
## Grading table

	1 strip OAK						3 strip OAK	
	City	Elite	Nordic	Town	Village	Ranch	Vintage	Village
Healthy knots (diam. up to)	10 mm	10 mm	10 mm	25 mm	50 mm	unlimited	15 mm	15 mm
Repaired knots (diam. up to)	none	7 mm	7 mm	20 mm	30 mm	60 mm	10 mm	8 mm
Sapwood allowed ( width up to)	3 mm	15 mm	unlimited	30 mm	35 mm	35 mm	unlimited	15 mm
Discoloration	Calm	Moderate	High	Natural	Natural	Natural	High	Natural

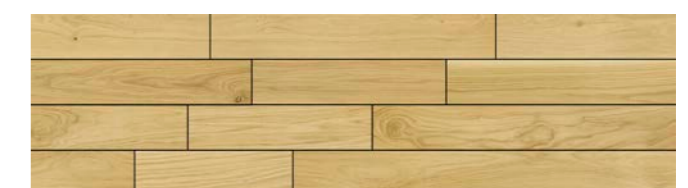
	1 strip ASH	3 strip ASH	
	Elegant	Elite	Elegant
Healthy knots (diam. up to)	20 mm	3 mm	3 mm
Repaired knots (diam. up to)	20 mm	none	5 mm
Discoloration	Moderate	Calm	Moderate
Brownheart	present	none	present

## Fixed length boards

The boards always come in full length to show the luxury and beauty of the floors. We believe the proportion is vital for high-end flooring and short boards can ruin the look.



Fixed Length Boards; Estaparket



Random Length; Other Factory

## Birch plywood insert for short end lock system

We use the strongest available material for short ends: birch plywood. The tension on the locks on short side of the boards can be extremely high, especially in dry climate periods. Softwood or artificial materials like HDF are often not able to withstand the tension which leads to open gaps between boards.



## Filler stained to color of design

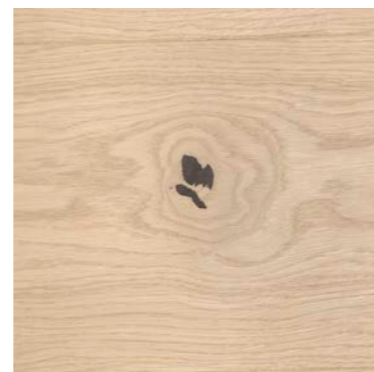
Filler repair at Estaparket factory is done only by hand, as it is the only way to achieve best quality. The advantage of our filler is that it can be stained and is ECO friendly. This allows to have calm and natural look for floors also with bigger knots.



MADE BY ESTAPARKET  
STAINED FILLER



MADE BY ESTAPARKET  
STAINED FILLER

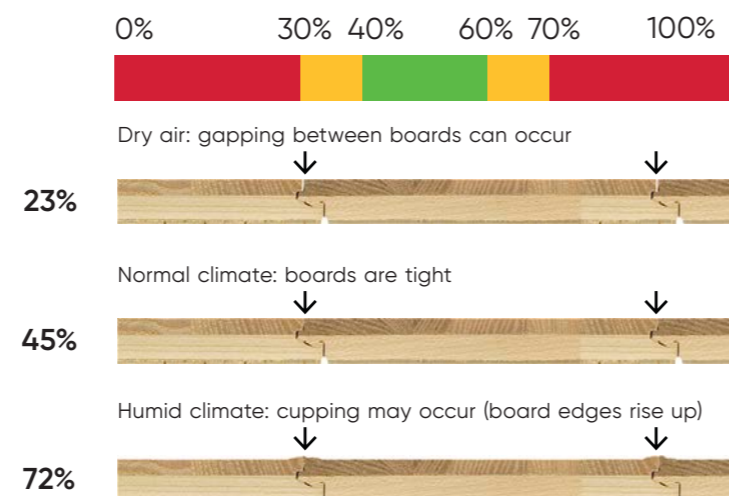


MADE BY OTHER FACTORY  
ONLY BLACK FILLER

## Climate

### Correct climate will keep you healthy and your floors beautiful

Ideal climate for parquet boards is same as for people: Relative Humidity 40–60% and temperature 14°C–23°C. Our parquet is made from real wood, natural living materials. Wood is adjusting according to climate (shrinking or expanding). Dry air (below 30% of Relative Humidity) is hazard not only for wooden floors, but also to humans, leading to asthma and other respiratory ailments. Too humid air will make your floors expand and make you feel fatigue and dehydrate.



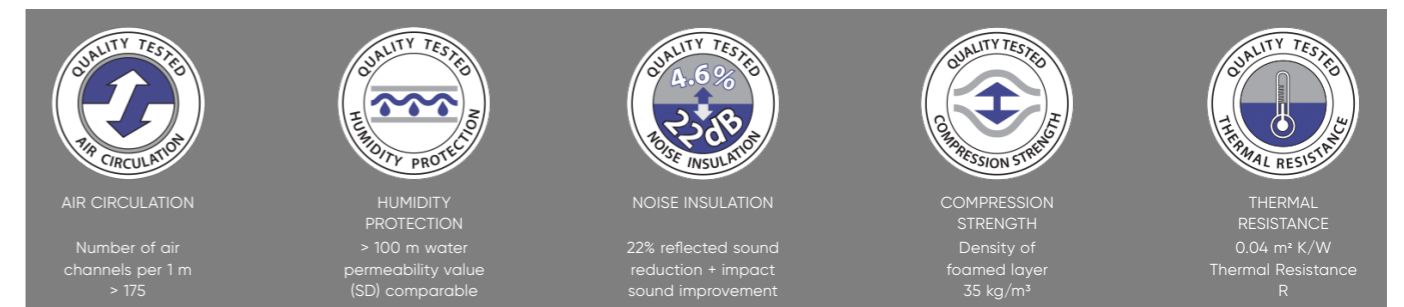
## Click system by UNILIN



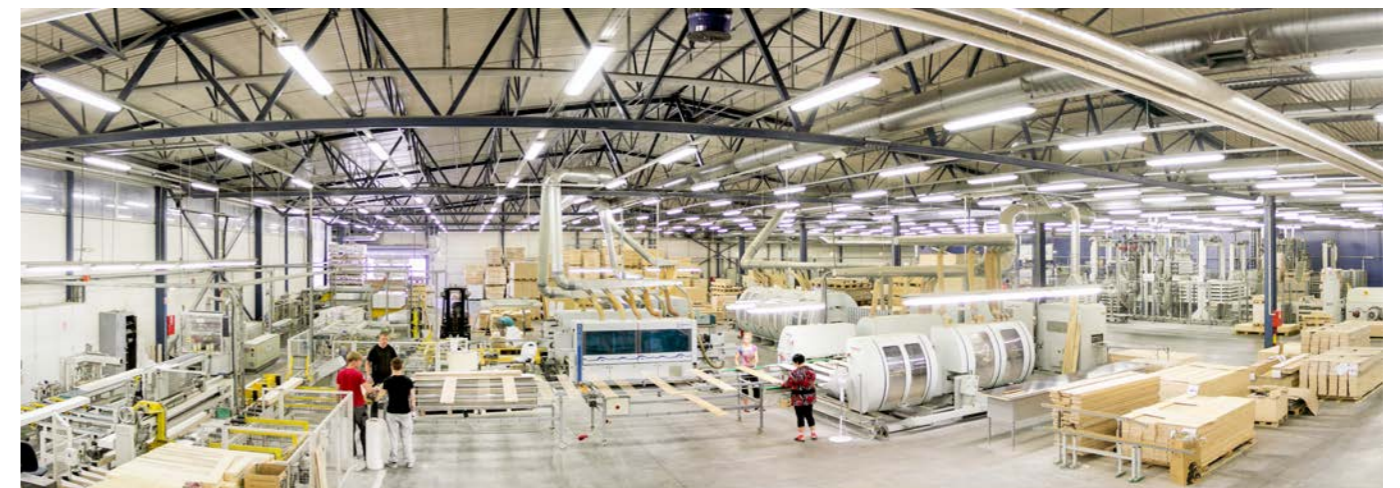
The construction of Estaparket lock system is designed to minimize gaps between boards. There are no plastic inserts, making sure all parts of lock system expand or shrink together following the whole construction. Estaparket guarantees lowest height tolerances between boards.

## Unique Estaparket underlayment allows your wooden floors to breathe

Avoid mould growing under your floor by letting your floors breathe. Unique Estaparket 2.3 mm thick underlayment uses air channels to circulate air under the floor using micro pumping system. Air channels in underlayment ensure a constant exchange of air when walked on. This eliminates water vapor from the floor. This underlayment also reduces sound by 22 dB and has a high level of compression strength. It also works well with underfloor heating.



## About Factory



Estaparket is the brand name for the parquet manufactured by TECHNOMAR & ADREM AS, a family owned private company founded in 1991. 100% of production is made in one factory in Estonia, EU Member, starting from drying the wood until the packed product. The concept is to produce Best Value products. At least 95% of products are exported to Customers in more than 72 countries throughout Europe, America, Asia and Africa.

## 100% from wood

Etaparket floors are fully recyclable. They are produced from renewable resources without damaging our nature. The wood sourced from controlled forests means that after every tree that was cut, there is new one planted.

We use our raw materials efficiently, almost without any waste. Offcuts are used for packaging and recycled into green energy. External audits and reviews of our environmental management systems are carried out on a regular basis.



We do not use HDF or any artificial material



## Unique slow wood drying process

We produce the parquet boards only in the factory in Estonia, starting from drying the wood to ensure superb quality. We dry wood ourselves, using only the green energy. Compared to 2 weeks drying process, which is standard in the industry, we dry wood for about 45 days. Slow drying makes considerably less stress to the wood, making floors more stable.



## M1 certified, no added VOC/Formaldehyde

Flooring industry standards and norms have not been updated for decades and are considerably less strict than M1. Formaldehyde emissions and VOC can be very dangerous and lead to various diseases. M1 certification guarantees that emissions from Estaparket are as slow, as they are found in the trees in Nature, making Estaparket floor perfectly safe for your home.



## Floor Heating

Etaparket floors are suitable for underfloor heating. The heating system should be adjusted so that the parquet temperature never exceeds +27°C. The maximum variation in temperature should not be more than 5°C within 24 hours.



## Cleaning and Maintenance

Etaparket floors are designed for easy cleaning and maintenance. Simply vacuum clean them regularly and mop up all spills promptly.

Daily cleaning: use vacuum cleaner.

Advanced cleaning (recommended 1-2 times a month): vacuum clean and then sweep them with a slightly humid mop and using universal floor cleaners or very small amount of warm soapy water. You should only sweep floors after you have cleaned them with vacuum cleaner, as otherwise you will sweep dust into the wooden pores.

## General Care and Damage Prevention

Please monitor moisture and temperature as set out below and take corrective measures, if necessary. Place doormats on both sides of your front door. Remove any dirt or other abrasives and wipe up liquid spills immediately. If you spill (food or drinks), wipe up with cloth or paper towels to prevent any permanent damage or staining. Protect all furniture with felt pads to avoid any scratching with movement. Avoid wearing high-heeled shoes on the floor, as they can dent or scratch the floor. Close curtains or blinds to limit direct sun exposure. Keep pet's nails trimmed to minimize damage to the surface.



## Etaparket Virtual Reality

You can now try how our floors will look in your room! Please follow the link for further instructions.

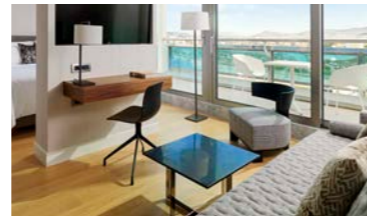
[www.estaparket.eu/vrfloor](http://www.estaparket.eu/vrfloor)



# References



**Marinsky Theatre**  
St. Petersburg, Russia



**Mariott Hotel**  
Athens, Greece



**Hilton Hotel**  
Tallinn, Estonia



**London Olympics Basketball**  
London, UK



**One Bloor Building. Tallest residential building in North America**  
Toronto, Canada

## HOTELS

- Consto Rica Hotell Narvik, Narvik, Norway
- Clarion Hotel, Stavanger, Norway
- Myrkdalen Hotel, Vossestrand, Norway
- Ramberg-Skedsmo, Skedsmokorest, Norway
- RICA Victoria, Oslo, Norway
- RICA Oslo, Oslo, Norway
- RICA, Göteborg, Sweden
- Quality Hotel Stavanger, Stavanger, Norway
- Quality hotel Tønsberg, Tønsberg, Norway
- Soria Moria hotel, Oslo, Norway
- Klaus K, Helsinki, Finland
- Högfjällshotellet, Sälen, Sweden
- Radisson Blu, Lillehammer, Norway
- Scandic Oscar, Varkaus, Finland
- Hilton, Tallinn, Estonia
- Clarion, Helsinki, Finland
- Hanasaari, Espoo, Finland
- Hanko Regatta Suites, Hanko, Finland
- Mariott, Athens, Greece
- Arkaden, Mästra, Sweden
- Marklandet, Täby, Sweden
- Tripla, Helsinki, Finland
- Radisson Blu, Oulu, Finland
- Maximilian, Prague, Czech Republic

...

## THEATERS AND PUBLIC HALLS

- Mariinsky Theatre Orkestra hall, Saint Petersburg, Russia
- Saint Petersburg State University of Economics, Saint Petersburg, Russia
- Istanbul University, Istanbul, Turkey
- Planet Wellness Village, Switzerland
- London 2012 Olympics Basketball Courts

...

## APARTMENTS

- Kista Torn (tallest residential building in the city), Stockholm, Sweden
- Horisont (tallest building in Jutland), Jutland, Denmark
- One Bloor (tallest residential building in Toronto), Toronto, Canada
- The Alba Takapuna block of flats (tallest building in the area), New Zealand
- Young and Rich, Toronto, Canada
- X2 Condos, Toronto, Canada
- Charle Condos, Toronto, Canada

...



FSC



FEP Certificate



Bureau Veritas



EPH Parquet Properties



Miraphen UV-Parquet Coatings



Estonian Chamber of Commerce and Industry



EPH Parquet Construction



M1 Emission Class  
The Building Information Foundation RTS



Bona Coating Certificate



Virtually try our floor at your home!

Technomar & Adrem AS  
Vana-Narva mnt 22, 74114  
Maardu, Estonia

Tel. +372 603 4865  
+372 603 4896  
Fax +372 603 4844  
+372 603 4845

[www.estaparket.eu](http://www.estaparket.eu)  
[info@estaparket.eu](mailto:info@estaparket.eu)

